

MANAGEMENT

STANDARD



FOR:

METAL PLATE SYSTEMS

USED BY:

- SHIPYARDS
- STEEL MILLS
- ARMED FORCES
- AUTOMOTIVE
- INDUSTRIAL MANUFACTURING
- HEAVY INDUSTRIES
- TRACEABILITY FOR INDUSTRIAL FACILITIES
- LOGISTICS MANAGEMENT

IDEAL FOR:

- VIN TAGS
- MILITARY DOG TAGS
- TRACKING TAGS
- ID TAGS
- SERIAL IDENTIFICATION

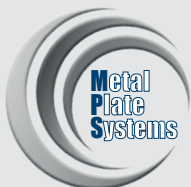
VERSIONS AVAILABLE:

optional

powertag
EVO

included

powertag
LITE



SOFTWARE POWERTAG



POWERTAG, THE MOST INTUITIVE, EASY TO USE AND POWERFUL METAL MARKING SOFTWARE

POWERTAG, with its two versions **Evo** and **Lite**, is CIM's response to a growing demand for intuitive, easy to use and powerful metal marking software that can manage both simple and more complex tag printing jobs.

POWERTAG Evo, is a versatile application, designed with an intuitive user interface that allows even beginners to manage graphics and data at an advanced level. The "Drag and Drop" feature allows insertion and positioning of fields easily. The menu bar and wizard function allow easy to access various operations and to execute them effortlessly. The software features a tag preview function that allows the user to see the final marking result in real-time.

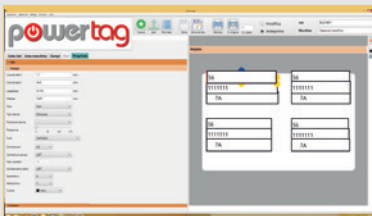
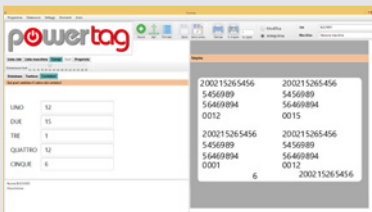
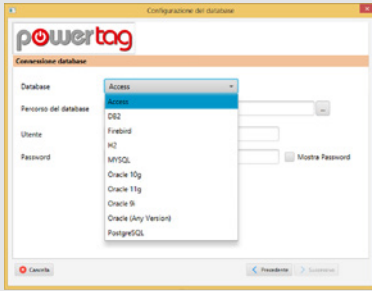
POWERTAG Lite, is simple and intuitive, for those who prefer to set the fields and their positioning on the plate through manual entry.

Both versions offer the ability to manage various machines simultaneously, this is very useful when more than one type of marking is required. A database allows the user to acquire the variable data for the tag marking.

The software interface with the most commonly used databases such as: My SQL, Oracle, Access, Firebird, etc., and is a multiplatform software and is, compatible with most operating systems such as Microsoft Windows 10, Linux and OSX.



FEATURES AND SPECIFICATIONS



OPERATING SYSTEMS

- Windows (from Windows 7 and latest)
- Linux (from Ubuntu 14.x and latest)
- Mac OS X (from 10.x and latest)

GUI

- Intuitive and simple GUI (Graphic User Interface)
- Drag and Drop manual mode
- Insertion of fields in "drag and drop" mode*
- Job preview
- Simplified function for job variations and fields *
- Works in millimeters and inches
- Option to insert a background image to facilitate job *

DATABASES

- Access
- Oracle
- MySQL
- Microsoft SQL Server
- PostgreSQL
- H2
- DB2
- Firebird
- Windows XLS, XLSX e CSV

DRUM CONFIGURATION (ME SERIES)

Easy and intuitive drum configuration

FONT CONFIGURATION (MDM SERIES)

Font True type - MS Windows

Storing 5/6 fonts simultaneously (depending on file size)

Up to three fonts can be used in the same job

Possibility to use up to two logos on the same job

MACHINE CONFIGURATION

- It is possible to save various configurations in order to use the same program and mark the same job on more machines.
- Possibility to test connections on the machine through serial

ACCESS

It is possible to gain access to the program as:

- SuperUser:Administrator mode
- Operator: Restricted mode (Open and Print jobs)

User passwords are managed by the administrator

SECURITY

- Program logs
- Production Logs
- Production Summary Logs
- Funzione di consultazione (per SuperUser)

MARKING

Single tag marking function

Tag control (User is prompted if text is too long) Enabled/dissabled function Funzione setup feature *

- Error management
- Database Production Status with color coding (Green: tag embossed, Yellow: select record for embossing

Red: error detected during embossing)

- Error management. Useful for further control

COUNTERS

Counters can be defined by:

- JOB;
- EMBOSSING;
- TOTAL

No limit to the number of counters

JOB

Can determine rectangular and round tags

Possibility to determine jobs with/without connection to database

Unlimited number of fields

Note: Functions marked with * are only available for POWERTAG *Evo* version